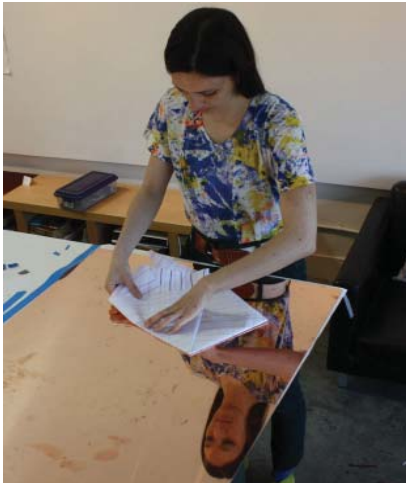




PAULSON BOTT
PRESS

Tauba Auerbach Fold/Slice Topo I & II September 2011



Paulson Bott Press invited Tauba Auerbach to make new prints this past spring. The complex process used to make *Fold/Slice Topo I & II* is explained here.

1. Tauba began by experimenting with different methods of folding paper. She folded vellum that was cut the same size as the copper plate.



4. The paper was misted with water to relax the folds and adhere it to the plate. The even numbered strips were removed.

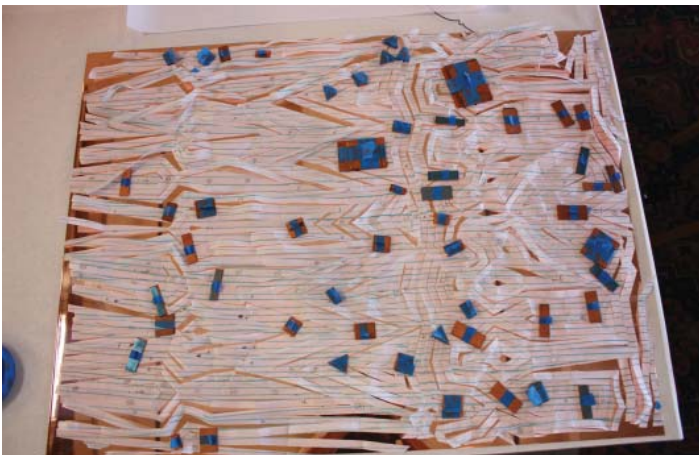
5. The excess water was blotted off and the remaining strips acted as a stencil. The plate was spray painted to create a resist. The stencil was removed exposing the copper.



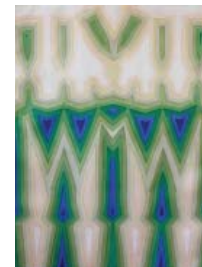
2. After intricately folding the paper she decided to cut it into parallel strips. Renee Bott used the plate cutter to make the slices while Tauba carefully collected and numbered the remnants from each slice.



6. The plate was aquatinted and etched in acid. An offset from the first plate was used to create the second plate. Auerbach chose colors to show a spectral transition in both hue and tone. The color gradations indicate the order of the slicing.



3. The paper slices were unfolded and pieced back together like a puzzle on top of the copper plate. We worked on multiple compositions simultaneously and used small weights to hold down the unruly paper. Many compositions were rejected along the way.



Fold/Slice Topo II, 2011



Fold/Slice Topo I, 2011